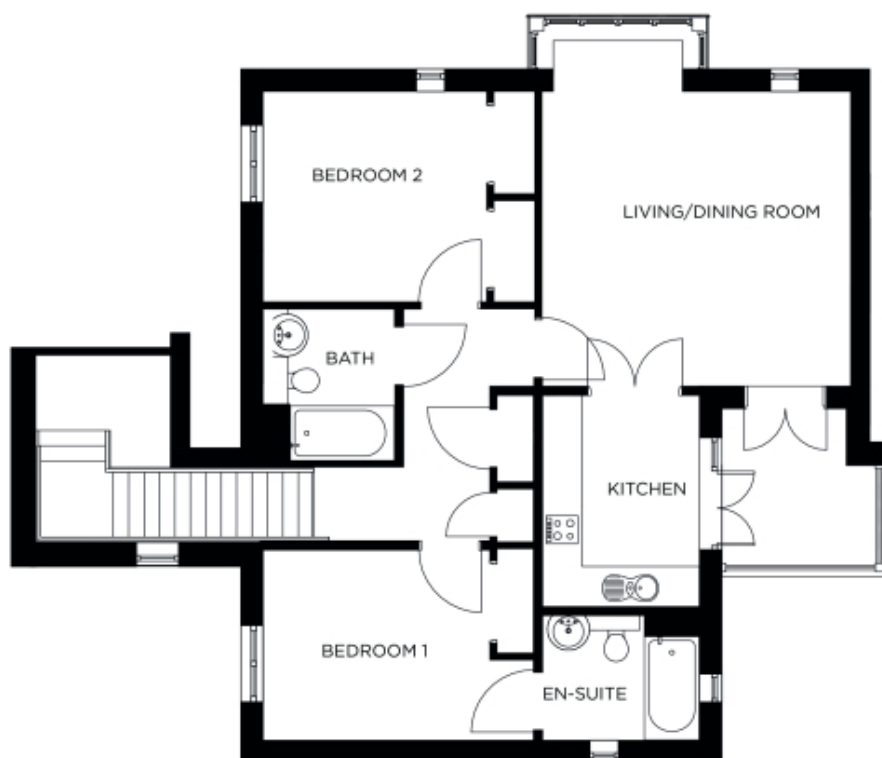


# 108 Beechwood House

A beautiful modern home



**Price: £588,000\*, First floor**

This spacious apartment comes with flexible open plan living space, a fully equipped kitchen and two generous double bedrooms - one with en suite bathroom. A further separate bathroom makes this the perfect apartment to accommodate family and friends - its practical design offers flexibility for your future without compromising on style.

\* other charges apply

Apart from the fixtures and fittings described, the homes are unfurnished.

\* Based on a 125-year lease, and subject to service charge, event fees and ground rent. Please ask for further information.

Version 3 - 19/10/2018

**Internal measurements: 1,119sq ft**

Kitchen	11' 3" x 8' 4"	3,420 x 2,540mm
Living/Dining Room	16' 2" x 16' 8"	4,910 x 5,060mm
Bedroom 1	12' 1" x 10' 5"	3,670 x 3,160mm
Ensuite	6' 8" x 8' 8"	2,030 x 2,620mm
Bedroom 2	11' 7" x 11' 3"	3,520 x 3,410mm
Bathroom	8' 0" x 7' 0"	2,430 x 2,130mm