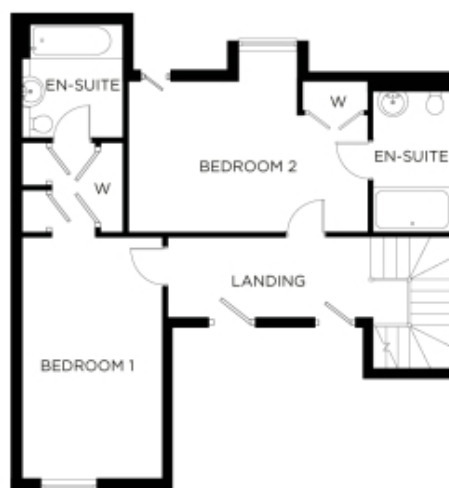


32 Hooke Court & Garage



Price: £650,000*

* other charges apply

Internal measurements: 1,371sq ft

Kitchen / Diner	19' 6" x 18' 1"	5,930 x 5,500mm
Living Room	13' 0" x 20' 10"	3,950 x 6,340mm
Bedroom 1	11' 0" x 10' 2"	3,350 x 3,090mm
Bedroom 2	11' 4" x 16' 8"	3,430 x 5,060mm
Bedroom 3	9' 5" x 13' 11"	2,870 x 4,240mm

Apart from the fixtures and fittings described, the homes are unfurnished.

* Based on a 125-year lease, and subject to service charge, event fees and ground rent. Please ask for further information.

Version 3 - 19/10/2018